
KIT PART NUMBER 6730038
INSTRUCTIONS FOR INSTALLING PERISTALIC PUMP KIT

CHECK THE PARTS RECEIVED IN THE KIT WITH THE PARTS LIST IN THESE INSTRUCTIONS. IF ANY PARTS ARE MISSING, CONTACT THE NATIONAL VENDORS PARTS DEPARTMENT IMMEDIATELY.

Read these instructions carefully before installing the kit.
Keep these instructions for part numbers and for future reference.

THIS KIT CONTAINS THE FOLLOWING :

PART NUMBER	DESCRIPTION	QUANTITY
6734072	PERISTALIC PUMP-ANKO 820	1
6404045	TUBE-32"	1
6730039	KIT INSTRUCTIONS	1

1. Unplug the merchandiser from the wall outlet.
2. Remove the pump assembly from the merchandiser:
 - a. Remove the four screws holding the pump cover to the pump body.
 - b. Carefully remove the pump cover. If you have to pry it off the pump body, only pry on the flat side where the tubing is located. If you pry on the curved section, you could damage it, which will in turn damage the tubing.
 - c. Spread the arms of the clip apart, and remove the roller assembly.
 - d. Spread the arms of the clip wide open and carefully lift it off the motor shaft.
 - e. Remove the four screws holding the pump body to the pump motor and remove the pump body.
3. Replace the pump and reassemble the roller assembly (See figure 1).
 - a. Attach the pump body to the pump motor with four screws.
 - b. Install the spring clip to the pump drive shaft.
 - c. Reassemble the roller assembly. The roller housing are interchangeable, and it makes no difference which way the roller assembly faces on the pump drive shaft with the following exception: Make sure the flat sides of the holes in the roller housings line up. Otherwise, you will not be able to put the roller assembly back on the pump motor shaft.

Note:

If the roller assembly is not installed all the way on the motor shaft, the pump tubing will be cut or the cover could interfere with the clip. The roller housings will break if hit with a hammer, so don't use one for this procedure.

- d. Slide the roller assembly back onto the pump motor shaft and secure with the clip. You may need to use a pair of pliers to CAREFULLY snap the clip back onto the roller housing.

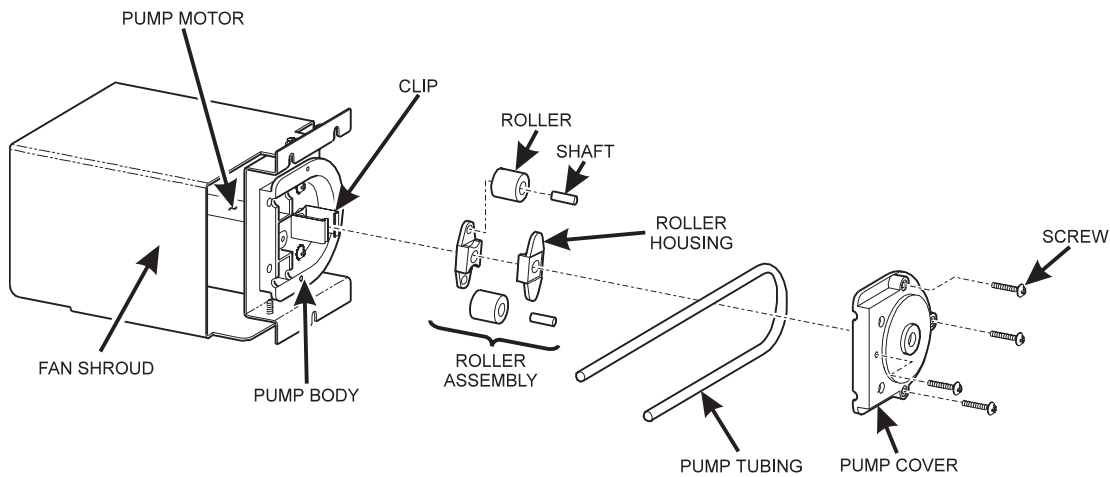


Figure 1

4. Install the pump tubing into the pump body.
 - a. Measure 9 1/2" from one end of the tubing. Mark it with a pencil.
 - b. Line the pencil mark up with the outside of the pump body as shown.
 - c. Work the tubing into the pump body while turning the roller assembly counterclockwise, as shown. Do not force the tubing. Make sure the top of the tubing is even with the tops of the rollers. If it is lower or higher, it can get pinched, which can lead to premature failure or leaks. Before installing the pump cover, turn the roller assembly as shown in (See figure 2), view A.
 - d. Note that the pump cover and pump body have locator pins and holes molded into the curved face, as shown. Use a flat object about 1/2" wide x 1/16"-1/8" thick (like a feeler gauge) **without** sharp edges to hold the tube in toward the roller assembly as you install the pump cover. This will allow you to assemble the cover without pinching the tubing between the top and bottom housing. Be sure the locator pins fit into their holes.
 - e. Hold the pump cover in place while inserting the four screws. Tighten the screws until they just snug up. **DO NOT OVERTIGHTEN.**
5. Install the pump into the merchandiser and connect the tubing. Connect the pump to the machine wiring harness.
6. Check for proper operation.

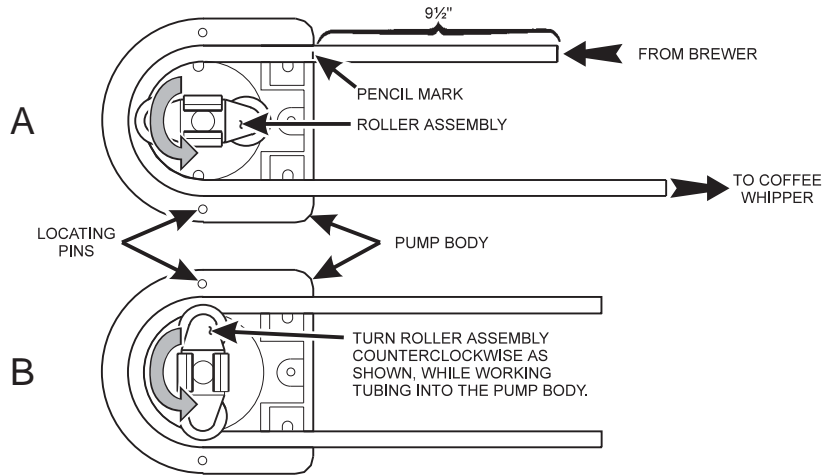


Figure 2